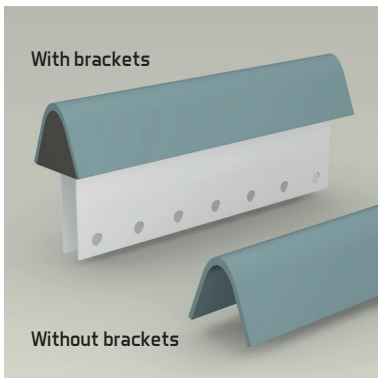


# How to order RE test

## OPERATION



Contact PolyTech's Anne Osberg (e-mail [ao@poly-tech.dk](mailto:ao@poly-tech.dk), phone +45 41 99 90 53) to order a rain erosion test.

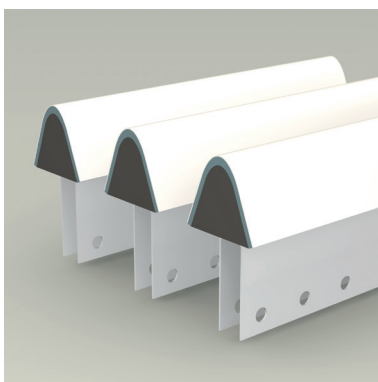


PolyTech offers profile specimens in GFR. The specimens can be delivered with or without brackets.

Various profile geometries are available dependent on test setup and material to be tested.

The test setup can contain up to 3 specimens in one test.

PolyTech forwards the untreated specimens of the ordered profile to the customer.

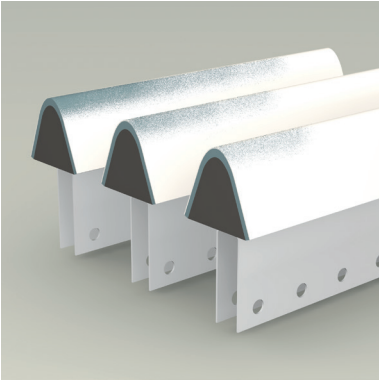


A time slot for test is booked at PolyTech.

The customer applies the material on the surface of the profiles.

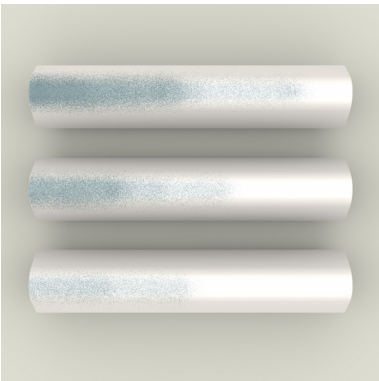
The customer returns the coated specimens to PolyTech for testing. The coated specimens should arrive at PolyTech one week prior to the pre-booked testing slot.

## OPERATION



The test is conducted according to customer specifications and according to the ASTM G73-10 standard or the DVNGL-RP-0171 recommended practice.

Minimum test duration is 3 hours.



High resolution images are captured of the specimens at customer defined interval during the rain erosion test.



When the test is finished, PolyTech's Anne Osberg e-mails a report to the customer.

PolyTech ships

- a test report in print
- high resolution images and a PDF version of the test report on a USB stick
- tested specimens

in our RE test kit and returns it to the customer.